

# Supplementary Material for Paper 79

February 10, 2015

Here, we give examples of three temporal segments from Maha65 learnt by SpMI, to illustrate our evaluation measures for segmentation. Each segment is visually represented by the set of the first frames of all tracklets covered by it.



Figure 1: A learnt temporal segment which is *pure* as it consists of frames from a single scenes. Note that it also covers several shots, and the two persons appear alternately

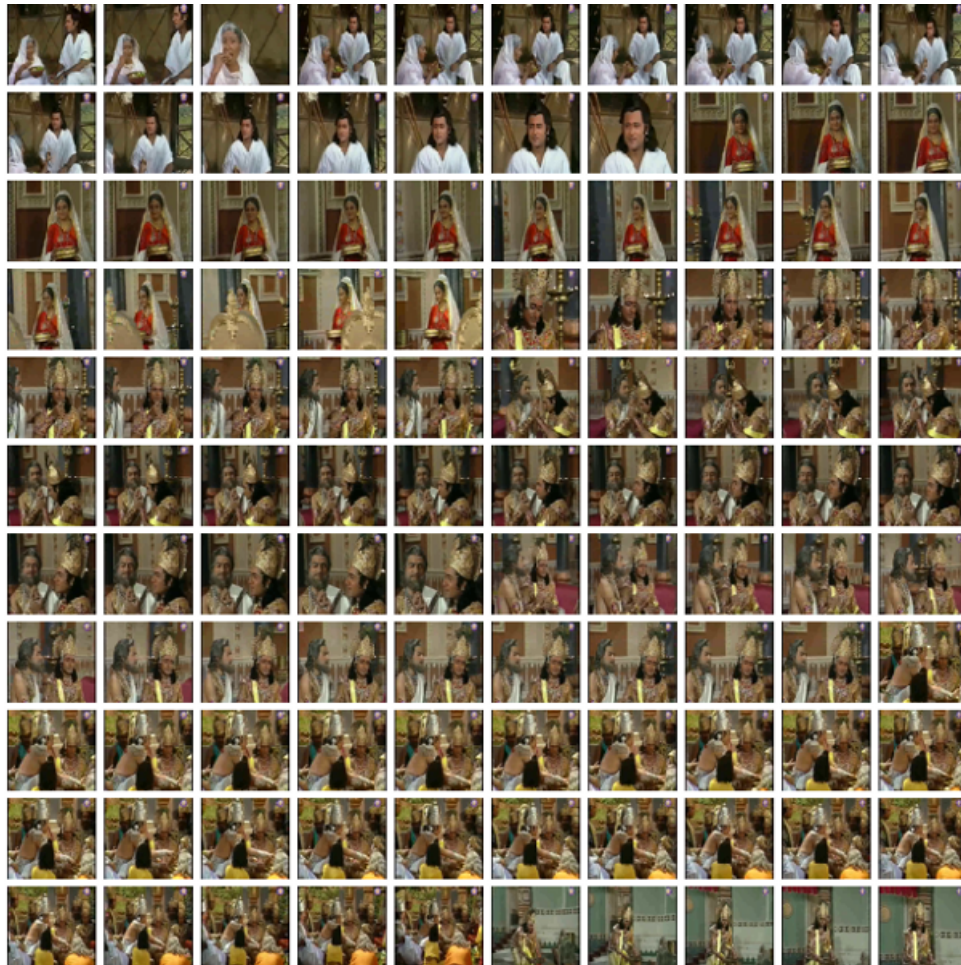


Figure 2: A learnt temporal segment which is *impure* as it consists of frames from several scenes

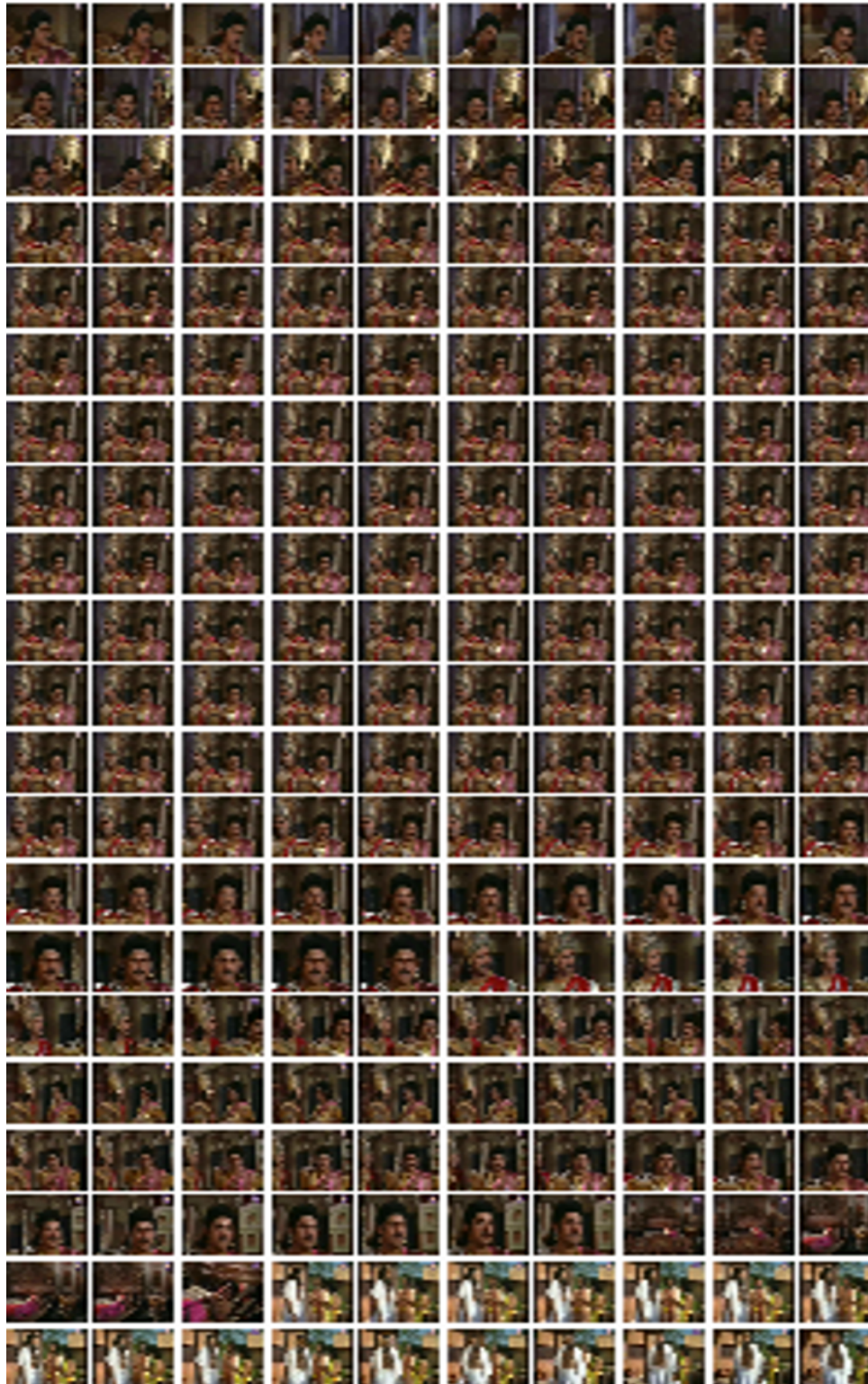


Figure 3: A learnt temporal segment which is *impure* as it consists of frames from several scenes, but it misses the true scene changepoint by a relatively short margin, which may be within tolerable limits.